

# Catalogue 2025

FAST

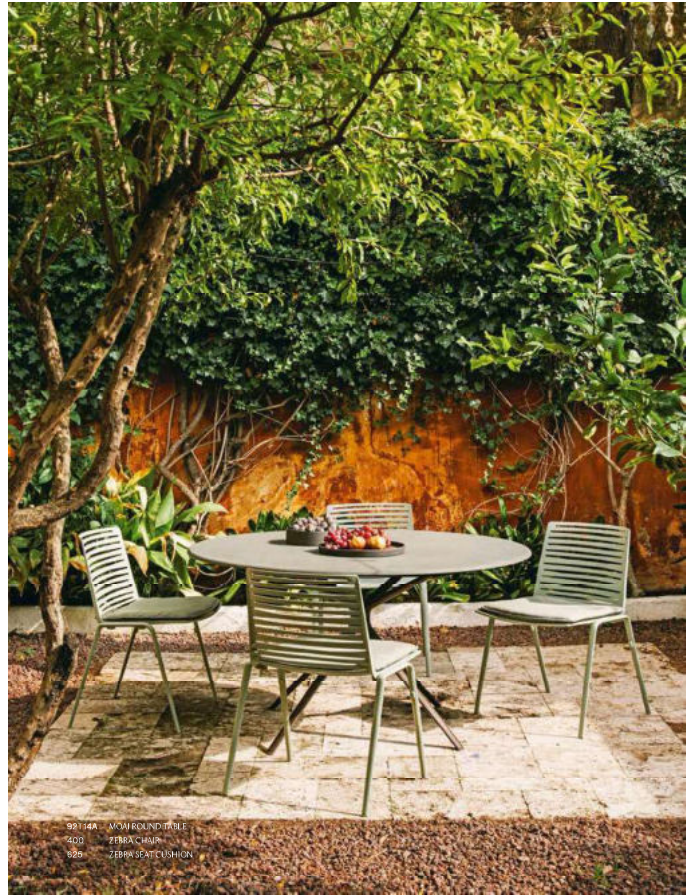
FAST

# MOAI

Design Studio Lievore Altherr

170

MOAI



171

FAST

MOAI



99P306 MOAI TABLE WITH TOP IN PORCELAIN/STONEWARE  
400 ZEBRA CHAIR  
401 ZEBRA CHAIR WITH ARMRESTES  
624 ZEBRA SEAT/BACKREST CUSHION  
626 ZEBRA SEAT CUSHION

172

173

FAST



174

MOAI

- 92Q14A MOAI TABLE
- 400 ZEBRA CHAIR
- 401 ZEBRA CHAIR WITH ARMRESTES

175

FAST



92T14G MOAI ROUND TABLE WITH TOP IN PORCELAIN STONEWARE DETAIL

176

MOAI



92T14G MOAI ROUND TABLE WITH TOP IN PORCELAIN STONEWARE

177

# Price List

01/10/2024 – 30/09/2025

IVA ESCLUSA / VAT FREE / OHNE MWST / HORS TVA / SIN IVA

FAST

**Alluminio verniciato • Painted aluminium (Lackiertes Aluminium • Aluminium verni • Aluminio lacado)**

1	Bianco • White ( <i>Weiß • Blanc • Blanco</i> )
2	Nero • Black ( <i>Schwarz • Noir • Negro</i> )
9	Grigio Metallo • Metallic Grey ( <i>Metallgrau • Gris Métal • Gris Metálico</i> )
11	Oro Perlato • Pearly Gold ( <i>Perlgold • Or Perlé • Oro Perlado</i> )
13	Azzurro Pastello • Light Blue ( <i>Pastell Hellblau • Bleu Pastel • Azul Pastel</i> )
14	Grigio Polvere • Powder Grey ( <i>Pulvergrau • Gris Poudré • Gris Polvo</i> )
19	Tè Verde • Green Tea ( <i>Grüner Tee • Thé Vert • Té Verde</i> )
26	Bianco Antico • Antique White ( <i>Antikes Weiß • Blanc Antique • Blanco Antiguo</i> )
27	Bianco Burro • Butter White ( <i>Butterweiß • Blanc Beurre • Blanco Mantequilla</i> )
28	Giallo Senape • Mustard Yellow ( <i>Senfgeb • Jaune Moutarde • Amarillo Mostaza</i> )
29	Rosso Autunno • Autumn Red ( <i>Herbstrot • Rouge Automne • Rojo Otoño</i> )
30	Marrone Castagna • Chestnut Brown ( <i>Kastanienbraun • Marron Châtaigne • Marrón Castaño</i> )
31	Verde Bottiglia • Bottle Green ( <i>Flaschengrün • Vert Bouteille • Verde Botella</i> )
32	Blu Grigio • Grey Blue ( <i>Blau Grau • Bleu Gris • Azul Gris</i> )

---

**Alluminio puntinato • Speckled aluminium (Gesprenkeltes Aluminium • Aluminium granité • Aluminio moteado)**

1S	Antracite • Anthracite ( <i>Anthrazit • Anthracite • Antracita</i> )
2S	Grigio • Grey ( <i>Grau • Gris • Gris</i> )

---

**NaturAll**

W03	Naturall Chiaro • Light Naturall ( <i>Helles Naturall • Naturall Clair • Naturall Claro</i> )
-----	-----------------------------------------------------------------------------------------------

---

**Gres • Stoneware (Feinsteinzeug • Grès • Gres)****Stoneware Range 1**

GNV	Neve • Snow ( <i>Schnee • Neige • Nieve</i> )
GNO	Nocciola • Hazel ( <i>Haselnuss • Noisette • Avellana</i> )
GNT	Notte • Night ( <i>Nacht • Nuit • Noche</i> )

**Stoneware Range 2**

GPL	Polare • Polar ( <i>Polar • Polaire • Polar</i> )
GDO	Dove • Dove ( <i>Dove • Dove • Dove</i> )
GMN	Mezzanotte • Midnight ( <i>Mitternacht • Minuit • Medianoche</i> )
GCR	Corten • Corten ( <i>Corten • Corten • Corten</i> )
GFU	Grigio Fumé • Smoky Grey ( <i>Rauchgrau • Gris Fumé • Gris Humo</i> )
GGC	Grigio Chiaro • Light Grey ( <i>Hellgrau • Gris Clair • Gris Claro</i> )
GDG	Grigio Scuro • Dark Grey ( <i>Dunkelgrau • Gris Foncé • Gris Oscuro</i> )

---

**Pietra lavica • Lava stone**

PL01	Borgogna • Burgundy ( <i>Burgund • Bordeaux • Borgoña</i> )
PL02	Abisso • Abyssal ( <i>Abyss • Aysse • Abismo</i> )
PL03	Foresta • Forest ( <i>Forst • Forêt • Selva</i> )

---

**Legno • Wood**

L01	Iroko • Iroko ( <i>Iroko • Iroko • Iroko</i> )
L02	Rovere Sbiancato • Bleached Oak ( <i>Gebleichter Eiche • Chêne Blanci • Roble Blanqueado</i> )
L03	Teak • Teak ( <i>Teak • Teck • Teca</i> )

---

**Malta • Mortar**

M01	Bianco Burro • Butter White ( <i>Butterweiß • Blanc Beurre • Blanco Mantequilla</i> )
M02	Oro Perlato • Pearly Gold ( <i>Perlgold • Or Perlé • Oro Perlado</i> )
M03	Giallo Senape • Mustard Yellow ( <i>Senfgeb • Jaune Moutarde • Amarillo Mostaza</i> )
M04	Grigio Metallo • Metallic Grey ( <i>Metallgrau • Gris Métal • Gris Metálico</i> )

---

**HPL**

AN	Antracite • Anthracite ( <i>Anthrazit • Anthracite • Antracita</i> )
BI	Bianco • White ( <i>Weiß • Blanc • Blanco</i> )
NE	Nero • Black ( <i>Schwarz • Noir • Negro</i> )
TA	Tortora • Taupe ( <i>Taupe • Gris Tourterelle • Gris Paloma</i> )

**Tessuti • Fabrics (Stoffe • Tissus • Tejidos)****Fabrics Range 1****Solids**

STA	Tortora • Taupe ( <i>Taupe • Gris Tourterelle • Gris Paloma</i> )
SLN	Lino • Linen ( <i>Leinen • Lin • Lino</i> )
SCH	Champagne • Champagne ( <i>Champagne • Champagne • Champán</i> )
SPE	Perla • Pearl ( <i>Perle • Perle • Perla</i> )
SMG	Grigio Minerale • Mineral Grey ( <i>Mineral Grau • Gris minéral • Gris Mineral</i> )
SGR	Grigio • Grey ( <i>Grau • Gris • Gris</i> )
SCI	Cannella • Cinnamon ( <i>Kannamon • Cannelle • Canela</i> )
SCC	Cioccolato • Choco ( <i>Schokolade • Chocolat • Chocolate</i> )
SNL	Navy • Navy ( <i>Navy • Navy • Navy</i> )

**Liso**

LCE	Cenere • Ash ( <i>Asche • Cendre • Ceniza</i> )
LGF	Grafite • Graphite ( <i>Graphit • Graphite • Grafito</i> )
LSA	Salvia • Sage ( <i>Salbei • Saugé • Sage</i> )

**Fabrics Range 2****Heritage recycle**

HDS	Deserto • Desert ( <i>Wüste • Désert • Desierto</i> )
HCE	Cereale • Cereal ( <i>Müsli • Céréales • Cereales</i> )
HRO	Strada • Road ( <i>Straße • Route • Calle</i> )
HCO	Rame • Coppery ( <i>Kupfer • Cuivre • Cobre</i> )
HPI	Pistacchio • Pistachio ( <i>Pistazie • Pistache • Pistacho</i> )
HOL	Oliva • Olive ( <i>Olive • Olive • Oliva</i> )
HAL	Pino • Alpine ( <i>Kiefer • Pin • Pino</i> )
HGR	Grano • Grain ( <i>Weizen • Grain • Trigo</i> )
HJE	Jeans • Jeans ( <i>Jeans • Jeans • Jeans</i> )
HCF	Caffè • Coffee ( <i>Kaffee • Café • Café</i> )

**Positano**

POME	Meringa • Meringue ( <i>Meringue • Meringue • Merengue</i> )
POQU	Quinoa • Quinoa ( <i>Quinoa • Quinoa • Quinoa</i> )
POTB	Tobacco • Tobacco ( <i>Tabak • Tabac • Tabaco</i> )
POAL	Aloe • Aloe ( <i>Aloe Aloe Aloe</i> )
POCL	Nuvola • Cloud ( <i>Wolke • Nuage • Nube</i> )
POSL	Ardesia • Slate ( <i>Schiefer • Ardoise • Pizarra</i> )
POOC	Ottanio • Octanio ( <i>Oktan-Grün • Octane • Verde Azulado</i> )
POBB	Mirtillo • Blueberry ( <i>Heidelbeere • Myrtle • Arándano</i> )

**Fabrics Range Laminated****Liso Laminated**

LCEL	Cenere • Ash ( <i>Asche • Cendre • Ceniza</i> )
LGFL	Grafite • Graphite ( <i>Graphit • Graphite • Grafito</i> )
LSAL	Salvia • Sage ( <i>Salbei • Saugé • Sage</i> )

**Solids Laminated**

SMIL	Minerale • Mineral ( <i>Mineral • Minéraux • Mineral</i> )
STAL	Tortora • Taupe ( <i>Taupe • Gris Tourterelle • Gris Paloma</i> )

**Fabrics Range Fireproof****Atrium**

ATAM	Amazzonia • Amazonia ( <i>Amazonas • Amazonie • Amazonia</i> )
ATAP	Albicocca • Apricot ( <i>Aprikose • Abricot • Albaricoque</i> )
ATCY	Canyon • Canyon ( <i>Canyon • Canyon • Canyon</i> )
ATDS	Mare Profondo • Deep Sea ( <i>Tiefsee • Mer Profonde • Mar Profundo</i> )
ATLI	Lime • Lime ( <i>Lime • Lime • Lime</i> )
ATPR	Pergamena • Parchment ( <i>Pergament • Parchemin • Pergamino</i> )
ATSV	Savana • Savannah ( <i>Savanne • Savane • Sabana</i> )
ATST	Tempesta • Storm ( <i>Sturm • Tempête • Tormenta</i> )
ATVO	Vulcano • Volcano ( <i>Vulcano • Volcan • Volcán</i> )
ATWM	Muschio Bianco • White Musk ( <i>Weißer Moschus • Musc Blanc • Almizcle Blanco</i> )

**Fabrics Range 3****Lopi**

LOCH	Carbone • Charcoal ( <i>Kohle • Charbon • Carbón</i> )
LOMR	Marmo • Marble ( <i>Marmor • Marbre • Mármol</i> )
LOSB	Sabbia • Sand ( <i>Sand • Sable • Arena</i> )
LOCP	Cappuccino • Cappuccino ( <i>Cappuccino • Cappuccino • Cappuccino</i> )
LOGV	Ghiaia • Gravel ( <i>Kies • Gravier • Grava</i> )
LOSU	Alba • Sunrise ( <i>Sonnenaufgang • Soleil Levant • Amanecer</i> )

**Slow**

SLCN	Cotone • Cotton ( <i>Baumwolle • Coton • Algodón</i> )
SLPA	Paprika • Paprika ( <i>Paprika • Paprika • Páprika</i> )
SLMF	Latte-menta • Mint Frost ( <i>Milch-Minze • Menthe-lait • Leche-menta</i> )
SLSW	Alghe • Seaweed ( <i>Algen • Algue • Algas</i> )

**Gaià**

GASF	Fiocco Di Neve • Snowflake ( <i>Schneeflocke • Floccon De Neige • Copo De Neve</i> )
GAVA	Vaniglia • Vanilla ( <i>Vanille • Vanille • Vainilla</i> )
GASG	Grigio Conchiglia • Seashell Grey ( <i>Muschel Grau • Gris Coquillage • Gris Concha</i> )
GAME	Meteorite • Meteorite ( <i>Meteorit • Météorite • Meteorito</i> )

**Mojito**

MODU	Duna • Dune ( <i>Düne • Dune • Duna</i> )
MOBR	Bronzo • Bronze ( <i>Bronze • Bronze • Bronce</i> )
MOIV	Avorio • Ivory ( <i>Elfenbein • Ivoire • Marfil</i> )
MOCA	Caramello • Caramel ( <i>Karamell • Caramel • Caramelo</i> )

**Cosmopolitan**

COWL	Bosco • Woodland ( <i>Wald • Bois • Bosque</i> )
COWA	Onde • Waves ( <i>Wellen • Vagues • Ondas</i> )
COMU	Fungo • Mushroom ( <i>Pilz • Champignon • Hongo</i> )

**Navarone**

NVSU	Zucchero • Sugar ( <i>Zucker • Sucre • Azúcar</i> )
NVSI	Seta • Silk ( <i>Seide • Soie • Seda</i> )
NVFL	Fiamma • Flame ( <i>Flamme • Flamme • Flame</i> )
NVTA	Grigio Tortora • Taupe Grey ( <i>Taubengrau • Gris Tourterelle • Gris Paloma</i> )
NVMO	Moka • Moka ( <i>Moka • Moka • Moka</i> )
NVMA	Blu Marino • Marine ( <i>Meeresblau • Bleu Mer • Azul Marino</i> )
NVGL	Ghiacciaio • Glacier ( <i>Gletscher • Glacier • Glaciér</i> )

**Delta**

DECY	Cipresso • Cypress ( <i>Zypern • Chypre • Chipre</i> )
DESP	Zaffiro • Shapphire ( <i>Shapphire • Shapphire • Zafiro</i> )
DEAM	Acquamarina • Acquamarine ( <i>Aquamarine • Aquamarine • Aquamarina</i> )
DEDU	Polvere • Dust ( <i>Pulver • Poudre • Polvo</i> )
DEWA	Wafer • Wafer ( <i>Wafer • Wafer • Wafer</i> )
DEPE	Pecan • Pecan ( <i>Pecan • Pécan • Pecán</i> )
DECN	Zucchero Filato • Cotton Candy ( <i>Glaszucker • Barbe À Papa • Algodón De Azúcar</i> )
DESA	Salmone • Salmon ( <i>Lachs • Saumon • Salmón</i> )
DEMA	Magnete • Magnet ( <i>Magnet • Magnet • Magnet</i> )

**Iris**

IRYO	Yogurt • Yogurt ( <i>Yogurt • Yogurt • Yogurt</i> )
IRCH	Ciliegia • Cherry ( <i>Kirsche • Cerise • Cereza</i> )
IRST	Corda • String ( <i>Seil • Corde • Cuerda</i> )
IROA	Avena • Oat ( <i>Hafer • Avoine • Avena</i> )
IRNE	Nettuno • Neptune ( <i>Neptun • Neptune • Neptuno</i> )

**Batyline • Batyline****Batyline Range 1**

BBI	Bianco • White ( <i>Weiß • Blanc • Blanco</i> )
BBR	Blu Ardesia • Slate Blue ( <i>Schiefer Blau • Bleu Ardoise • Azul Pizarra</i> )
BEC	Ecru • Ecru ( <i>Ecru • Ecru • Ecru</i> )
BGR	Grigio • Grey ( <i>Grau • Gris • Gris</i> )
BMA	Marrone • Brown ( <i>Braun • Marron • Marrón</i> )
BNE	Nero • Black ( <i>Schwarz • Noir • Negro</i> )
BVE	Verde • Green ( <i>Grün • Vert • Verde</i> )



## Batyline Range 2

BCA	Cacao • Cacao (Kakao • Cacao • Cacao)
BBE	Beige • Beige (Beige • Beige • Beige)
BMK	Latte • Milk (Milch • Lait • Leche)

## Similpelle • Leatherette

SP01	Ambra • Amber (Bernstein • Ambre • Ámbar)
SP02	Papiro • Papyrus (Papyrus • Papyrus • Papiro)
SP03	Cashmere • Cashmere (Kaschmir • Cachemire • Cachemira)
SP04	Nero Puro • Pure Black (Reines Schwarz • Noir Pur • Negro Puro)

## Feltro • Felt (Filz • Feutre • Fieltro)

FCL	Colonia • Colonial Blue (Kolonial Blau • Colonial Bleu • Azul Colonial)
FDG	Grigio Scuro • Dark Grey (Dunkelgrau • Gris Foncé • Gris Oscuro)
FPN	Panna • Cream (Creme • Crème • Crema)
FRA	Rame • Copper (Kupfer • Cuivre • Cobre)
FTA	Tortora • Taupe (Taupe • Gris Tourterelle • Gris Paloma)

## Corde • Ropes (Schnüre • Cordes • Cuerdas)

C01	Arizona • Arizona (Arizona • Arizona • Arizona)
C02	Sabbia Nera • Black Sand (Schwarzen Sand • Sable Noir • Arena Negra)
C03	Menta • Mint (Minze • Menthe • Menta)
C04	Luna • Moon (Mond • Lune • Luna)
C05	Roccia • Rock (Stein • Rocher • Roca)
C06	Tramonto • Sunset (Sonnenuntergang • Crépuscule • Puesta de Sol)
C07	Oceano • Ocean (Ozean • Océan • Océano)
C08	Brownie • Brownie (Brownie • Brownie • Brownie)

## Corde piatte • Flat ropes (Flache Schnüre • Cordes plates • Cuerdas planas)

F01	Arizona • Arizona (Arizona • Arizona • Arizona)
F02	Sabbia Nera • Black Sand (Schwarzen Sand • Sable Noir • Arena Negra)
F03	Menta • Mint (Minze • Menthe • Menta)
F04	Luna • Moon (Mond • Lune • Luna)
F05	Roccia • Rock (Stein • Rocher • Roca)
F07	Oceano • Ocean (Ozean • Océan • Océano)
F08	Brownie • Brownie (Brownie • Brownie • Brownie)



### USO ESTERNO • OUTDOOR USE

Il prodotto è utilizzabile all'esterno, senza elevata manutenzione in caso di pioggia debole o elevata (per prodotti solo alluminio, alluminio puntinato e NaturAll, alluminio con gres, alluminio con malta, alluminio con pietra lavica, alluminio con batyline, alluminio con corda/corda piatta e alluminio con HPL)  
*The product can be used outdoor without high maintenance in weak or heavy rain (only for products in aluminium, speckled aluminium and naturall, aluminium with stoneware, aluminium with mortar, aluminium with lava stone, aluminium with batyline, aluminium with rope/flat rope and aluminium with HPL)*



### USO ESTERNO CON MANUTENZIONE • OUTDOOR USE AND MAINTENANCE

Il prodotto è utilizzabile all'esterno, il tessuto è impermeabile all'acqua ma in caso di pioggia elevata si consiglia una manutenzione o l'utilizzo delle cover protettive (per prodotti in alluminio con tessuti range laminati e alluminio con similpelle)  
*The product can be used outdoor, and the fabric is waterproof, but in case of heavy rain, it is recommended a maintenance or the use of the protective covers (for products in aluminum with laminated range fabrics and aluminum with leatherette)*



### USO ESTERNO CON ATTENZIONE • OUTDOOR USE AND CAUTION

Il prodotto è utilizzabile all'esterno, il tessuto non è impermeabile all'acqua, in caso di pioggia debole o elevata si consiglia di ritirare i cuscini o utilizzare le cover protettive (per prodotti in alluminio con tessuti range 1-2-3)  
*The product can be used outdoor, the fabric is not waterproof. In case of weak or heavy rain it is recommended to remove the cushions or use the protective covers (for products in aluminum with fabrics range 1-2-3)*



### USO ESTERNO CON ATTENZIONE E TESSUTO IGNIFUGO • OUTDOOR USE AND CAUTION - FIREPROOF FABRIC

Il prodotto è utilizzabile all'esterno, è dotato di un tessuto ignifugo non impermeabile all'acqua, in caso di pioggia debole o elevata si consiglia di ritirare i cuscini o utilizzare le cover protettive (per prodotti in alluminio con tessuti range ignifughi)  
*The product can be used outdoor, it is equipped with a fireproof fabric that is not waterproof. In case of weak or heavy rain, it is recommended to remove the cushions or use the protective covers (for products in aluminum with fireproof range fabrics)*



### USO ESTERNO SOTTO COPERTURA • SHELTERED OUTDOOR USE ONLY

Il prodotto è utilizzabile all'esterno, si consiglia di utilizzarlo sotto una copertura o sotto un portico (per prodotti in alluminio con iroko, alluminio con rovere sbiancato, alluminio con teak e i feltri)  
*The product can be used outdoor, it is recommended to use it sheltered or under a porch (for products in aluminum with iroko, aluminum with bleached oak, aluminum with teak, and felts)*



### Impilabile • Stackable (Stapelbar • Empilable • Apilable)



### Peso lordo • Gross weight (Bruttogewicht • Poids brut • Peso bruto)



### Imballo • Packaging (Verpackung • Embalage • Embalaje)

ASS.

### Assemblato • Assembled (Montiert • Monté • Montado)

DIS.

### Disassemblato • Disassembled (Demontiert • Demonté • Desmontado)



### Dimensione e volume • Dimension and volume (Maße und Volumen • Dimension et volume • Medida y volumen)



### Personalizzabile previa valutazione • Custom on evaluation (Custom zur Bewertung • Custom sur l'évaluation • Custom en evaluación)



### Personalizzabile in altezza • Custom in height (Custom in der Höhe • Custom en hauteur • Custom en altura)



### Personalizzabile in lunghezza • Custom in length (Custom in der Länge • Custom en longueur • Custom en longitud)



### Personalizzabile in larghezza • Custom in width (Custom in die breite • Custom en largeur • Custom en anchura)

EPD

### Certificazione ambientale • Environmental product declaration (Umweltzertifizierung • Déclaration environnementale • Declaración ambiental)

# MOAI

**Design** Studio Lievore Altherr

<sup>IT</sup> La versatilità è la caratteristica distintiva di questa collezione di tavoli da esterno di design ispirata alle peculiari forme del pino romano. L'esilità della struttura è solo apparente: le gambe, come robuste radici, sostengono infatti eleganti piani in alluminio, alluminio puntinato e gres. I tavoli Moai sono adatti a ogni contesto, sia residenziale che contract.

<sup>EN</sup> Versatility is the distinguishing feature of this collection of outdoor garden tables, which draws its inspiration from the peculiar shapes of the stone pine tree. The slimness of the frame is only apparent: the legs, like robust roots, in fact support elegant aluminium, speckled aluminium or porcelain-stoneware tops. Moai tables are suitable for any setting, both residential and contract.



Dettaglio: gambe del tavolo • Detail: table legs



Cura del dettaglio • Attention to details

# MOAI



IT Tavolo tondo in alluminio verniciato  
 EN Round table in painted aluminium  
 DE Runder Tisch aus lackiertem Aluminium  
 FR Table ronde en aluminium verni  
 ES Mesa redonda en aluminio lacado

**92T12A** 45 kg 1 DIS. cm 135 x 135 x 20 m³ 0,365

Dimensions  $\varnothing$  120 x h 74 cm

**Painted alu**  
 ALL COLOURS

**Price**  
 € 2.745

**92T14A** 50 kg 1 DIS. cm 159 x 159 x 20 m³ 0,506

Dimensions  $\varnothing$  146 x h 74 cm

**Painted alu**  
 ALL COLOURS

**Price**  
 € 3.035



IT Tavolo quadrato in alluminio verniciato  
 EN Square table in painted aluminium  
 DE Quadratischer Tisch aus lackiertem Aluminium  
 FR Table carrée en aluminium verni  
 ES Mesa cuadrada en aluminio lacado

**92Q14A** 52 kg 1 DIS. cm 159 x 159 x 20 m³ 0,506

Dimensions 140 x 140 x h 74 cm

**Painted alu**  
 ALL COLOURS

**Price**  
 € 2.905



IT Tavolo rettangolare in alluminio verniciato  
 EN Rectangular table in painted aluminium  
 DE Rechteckiger Tisch aus lackiertem Aluminium  
 FR Table rectangulaire en aluminium verni  
 ES Mesa rectangular en aluminio lacado

**92R16A** 52 kg 1 DIS. cm 183 x 110 x 22 m³ 0,442

Dimensions 160 x 90 x h 74 cm

**Painted alu**  
 ALL COLOURS

**Price**  
 € 2.700

# MOAI



IT Tavolo rettangolare in alluminio verniciato  
 EN Rectangular table in painted aluminium  
 DE Rechteckiger Tisch aus lackiertem Aluminium  
 FR Table rectangulaire en aluminium verni  
 ES Mesa rectangular en aluminio lacado

## 92R22A

63 kg 1 DIS. cm 250 x 115 x 20 m<sup>3</sup> 0,575  
 Dimensions 220 x 100 x h 74 cm

**Painted alu**  
 ALL COLOURS

**Price**  
 € 3.285

## 92R29A

75 kg 1 DIS. cm 317 x 117 x 22 m<sup>3</sup> 0,816  
 Dimensions 290 x 100 x h 74 cm

**Painted alu**  
 ALL COLOURS

**Price**  
 € 3.820



IT Tavolo tondo in alluminio verniciato con piano in alluminio puntinato  
 EN Round table in painted aluminium with top in speckled aluminium  
 DE Runder Tisch aus lackiertem Aluminium mit Tischplatte aus gesprenkeltem Aluminium  
 FR Table ronde en aluminium verni avec plateau en aluminium granité effet pierre  
 ES Mesa redonda en aluminio lacado con tapa en aluminio moteado

## 92T12S

45 kg 1 DIS. cm 135 x 135 x 20 m<sup>3</sup> 0,365  
 Dimensions ø 120 x h 74 cm

**Painted alu**  
 ALL COLOURS

**Speckled alu**  
 • 1S/2S

**Price**  
 € 2.885

## 92T14S

50 kg 1 DIS. cm 159 x 159 x 20 m<sup>3</sup> 0,506  
 Dimensions ø 146 x h 74 cm

**Painted alu**  
 ALL COLOURS

**Speckled alu**  
 • 1S/2S

**Price**  
 € 3.185



IT Tavolo quadrato in alluminio verniciato con piano in alluminio puntinato  
 EN Square table in painted aluminium with top in speckled aluminium  
 DE Quadratischer Tisch aus lackiertem Aluminium mit Tischplatte aus gesprenkeltem Aluminium  
 FR Table carrée en aluminium verni avec plateau en aluminium granité effet pierre  
 ES Mesa cuadrada en aluminio lacado con tapa en aluminio moteado

## 92Q14S

52 kg 1 DIS. cm 159 x 159 x 20 m<sup>3</sup> 0,506  
 Dimensions 140 x 140 x h 74 cm

**Painted alu**  
 ALL COLOURS

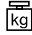


**Speckled alu**  
 • 1S/2S

**Price**  
 € 3.050

# MOAI









IT Tavolo rettangolare in alluminio verniciato con piano in alluminio puntinato  
 EN Rectangular table in painted aluminium with top in speckled aluminium  
 DE Rechteckiger Tisch aus lackiertem Aluminium mit Tischplatte aus gesprenkeltem Aluminium  
 FR Table rectangulaire en aluminium verni avec plateau en aluminium granité effet pierre  
 ES Mesa rectangular en aluminio lacado con tapa en aluminio moteado

**92R16S**  52 kg  1 DIS.  cm 183 x 110 x 22 m<sup>3</sup> 0,442  
 Dimensions 160 x 90 x h 74 cm  
**Painted alu** **Speckled alu** **Price**  
 ALL COLOURS • 1S/2S € 2.835



IT Tavolo rettangolare in alluminio verniciato con piano in alluminio puntinato  
 EN Rectangular table in painted aluminium with top in speckled aluminium  
 DE Rechteckiger Tisch aus lackiertem Aluminium mit Tischplatte aus gesprenkeltem Aluminium  
 FR Table rectangulaire en aluminium verni avec plateau en aluminium granité effet pierre  
 ES Mesa rectangular en aluminio lacado con tapa en aluminio moteado

**92R22S**  63 kg  1 DIS.  cm 250 x 115 x 20 m<sup>3</sup> 0,575  
 Dimensions 220 x 100 x h 74 cm  
**Painted alu** **Speckled alu** **Price**  
 ALL COLOURS • 1S/2S € 3.450

**92R29S**  75 kg  1 DIS.  cm 317 x 117 x 22 m<sup>3</sup> 0,816  
 Dimensions 290 x 100 x h 74 cm  
**Painted alu** **Speckled alu** **Price**  
 ALL COLOURS • 1S/2S € 4.015



IT Tavolo tondo in alluminio verniciato con piano in gres porcellanato (sp. 12 mm)  
 EN Round table in painted aluminium with top in porcelain stoneware (th. mm 12)  
 DE Runder Tisch aus lackiertem Aluminium mit Tischplatte aus Feinsteinzeug (Stärke 12 mm)  
 FR Table ronde en aluminium verni avec plateau en grès porcelainé (épaisseur 12 mm)  
 ES Mesa redonda en aluminio lacado con tapa en gres porcelánico (sp. mm. 12)

**92T12G**   61 kg  1 DIS.  cm 135 x 135 x 20 m<sup>3</sup> 0,365  
 Dimensions ø 120 x h 74 cm  
**Painted alu** **Stoneware** **Price**  
 ALL COLOURS • GPL/GDO/GMN € 3.460  
 GCR/GGC/GDG

**92T14G**   76 kg  1 DIS.  cm 159 x 159 x 20 m<sup>3</sup> 0,506  
 Dimensions ø 146 x h 74 cm  
**Painted alu** **Stoneware** **Price**  
 ALL COLOURS • GPL/GDO/GMN € 3.825  
 GCR/GGC/GDG

# MOAI



- IT Tavolo rettangolare in alluminio verniciato con piano in gres porcellanato (sp. 6 mm)
- EN Rectangular table in painted aluminium with porcelain stoneware table top (th. mm 6)
- DE Rechteckiger Tisch aus lackiertem Aluminium mit Tischplatte aus Feinsteinzeug (Stärke 6 mm)
- FR Table rectangulaire en aluminium verni avec plateau en grès porcelainé (épaisseur 6 mm)
- ES Mesa rectangular en aluminio lacado con tapa en gres porcelánico (sp. mm. 6)

## 92R15G

60 kg 1 DIS. cm 183 x 110 x 22 m³ 0,442

Dimensions 150 x 90 x h 75 cm

### Painted alu

### Stoneware

### Price

- RANGE 1

€ 3.075

ALL COLOURS

- RANGE 2

€ 3.540



- IT Tavolo rettangolare in alluminio verniciato con piano in gres porcellanato (sp. 6 mm)
- EN Rectangular table in painted aluminium with porcelain stoneware table top (th. mm 6)
- DE Rechteckiger Tisch aus lackiertem Aluminium mit Tischplatte aus Feinsteinzeug (Stärke 6 mm)
- FR Table rectangulaire en aluminium verni avec plateau en grès porcelainé (épaisseur 6 mm)
- ES Mesa rectangular en aluminio lacado con tapa en gres porcelánico (sp. mm. 6)

## 92R22G

80 kg 1 DIS. cm 250 x 115 x 20 m³ 0,575

Dimensions 220 x 100 x h 75 cm

### Painted alu

### Stoneware

### Price

- RANGE 1

€ 3.920

ALL COLOURS

- RANGE 2

€ 4.510

## 92R30G

110 kg 1 DIS. cm 317 x 117 x 22 m³ 0,816

Dimensions 300 x 100 x h 75 cm

### Painted alu

### Stoneware

### Price

- RANGE 1

€ 4.295

ALL COLOURS

- RANGE 2

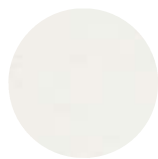
€ 5.200

# FRAMES & FABRICS

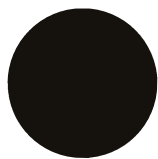
## FINITURE ALLUMINIO • ALUMINIUM FRAMES

### Alluminio Verniciato • Painted Aluminium

---



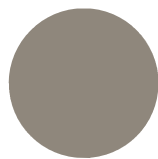
**1**  
Bianco  
White



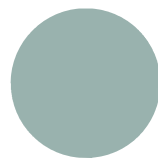
**2**  
Nero  
Black



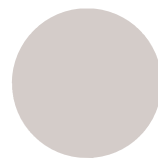
**9**  
Grigio Metallo  
Metallic Grey



**11**  
Oro Perlato  
Pearly Gold



**13**  
Azzurro Pastello  
Light Blue



**14**  
Grigio Polvere  
Powder Grey



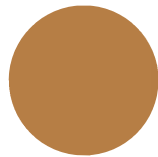
**19**  
Tè Verde  
Green Tea



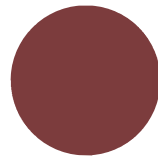
**26**  
Bianco Antico  
Antique White



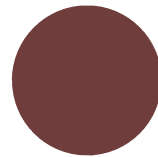
**27**  
Bianco Burro  
Butter White



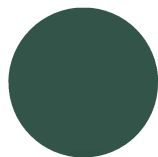
**28**  
Giallo Senape  
Mustard Yellow



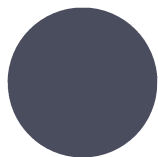
**29**  
Rosso Autunno  
Autumn Red



**30**  
Marrone Castagna  
Chestnut Brown



**31**  
Verde Bottiglia  
Bottle Green



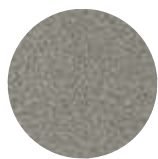
**32**  
Blu Grigio  
Grey Blue

### Alluminio Puntinato • Speckled Aluminium

---



**1S**  
Antracite  
Anthracite



**2S**  
Grigio  
Grey

### NaturAll

---



**W03**  
NaturAll Chiaro  
Light NaturAll



## GRES • STONEWARE

### Range 1

---



**GNV**  
Neve  
Snow



**GNO**  
Nocciola  
Hazel



**GNT**  
Notte  
Night

### Range 2

---



**GPL**  
Polare  
Polar



**GDO**  
Dove  
Dove



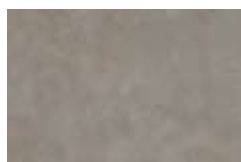
**GMN**  
Mezzanotte  
Midnight



**GCR**  
Corten  
Corten



**GFU**  
Grigio Fumé  
Smoky Grey



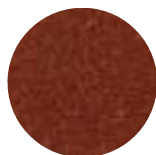
**GGC**  
Grigio Chiaro  
Light Grey



**GDG**  
Grigio Scuro  
Dark Grey

---

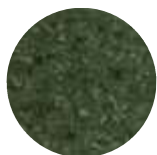
## PIETRA LAVICA • LAVA STONE



**PL01**  
Borgogna  
Burgundy



**PL02**  
Abisso  
Abyssal



**PL03**  
Foresta  
Forest

---

## LEGNO • WOOD



**L01**  
Iroko  
Iroko



**L02**  
Rovere Sbiancato  
Bleached Oak



**L03**  
Teak  
Teak

## MALTA • MORTAR



**M01**  
Bianco Burro  
Butter White



**M02**  
Oro Perlato  
Pearly Gold



**M03**  
Giallo Senape  
Mustard Yellow



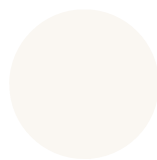
**M04**  
Grigio Metallo  
Metallic Grey

---

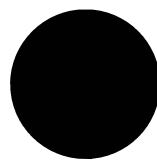
## HPL



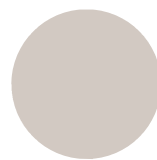
**AN**  
Antracite  
Anthracite



**BI**  
Bianco  
White



**NE**  
Nero  
Black



**TA**  
Tortora  
Taupe

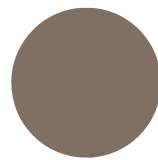
---

## TESSUTI • FABRICS

### Range 1

---

Solids 



**STA**  
Tortora  
Taupe



**SLN**  
Lino  
Linen



**SCH**  
Champagne  
Champagne



**SPE**  
Perla  
Pearl



**SMG**  
Grigio Minerale  
Mineral Grey



**SGR**  
Grigio  
Grey



**SCI**  
Cannella  
Cinnamon

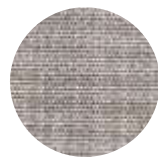


**SCC**  
Cioccolato  
Choco

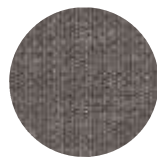


**SNA**  
Navy  
Navy

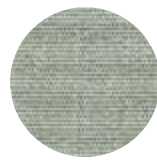
Liso **(agon)**



**LCE**  
Cenere  
Ash



**LGF**  
Grafite  
Graphite



**LSA**  
Salvia  
Sage

# TESSUTI • FABRICS

## Range 2

---

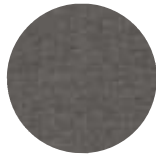
Heritage recycle  sunbrella



**HDS**  
Deserto  
Desert



**HCE**  
Cereale  
Cereal



**HRO**  
Strada  
Road



**HCO**  
Rame  
Coppery



**HPI**  
Pistacchio  
Pistachio



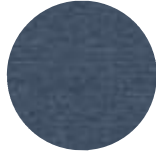
**HOL**  
Oliva  
Olive



**HAL**  
Pino  
Alpine




**HGR**  
Grano  
Grain



**HJE**  
Jeans  
Jeans



**HCF**  
Caffè  
Coffee

Positano 



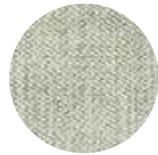
**POME**  
Meringa  
Meringue



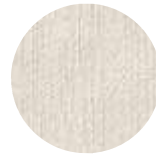
**POQU**  
Quinoa  
Quinoa



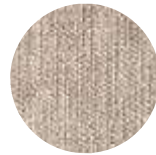
**POTB**  
Tabacco  
Tobacco



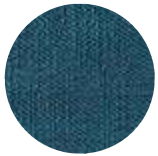
**POAL**  
Aloe  
Aloe



**POCL**  
Nuvola  
Cloud



**POSL**  
Ardesia  
Slate



**POOC**  
Ottanio  
Octanio



**POBB**  
Mirtillo  
Blueberry

Range 3

Lopi 



**LOCH**  
Carbone  
Charcoal



**LOMR**  
Marmo  
Marble



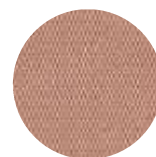
**LOSB**  
Sabbia  
Sand



**LOCP**  
Cappuccino  
Cappuccino



**LOGV**  
Ghiaia  
Gravel

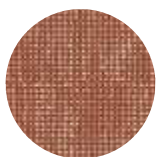


**LOSU**  
Alba  
Sunrise

Slow 



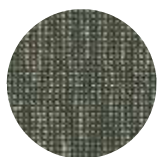
**SLCN**  
Cotone  
Cotton



**SLPA**  
Paprika  
Paprika



**SLMF**  
Latte-menta  
Mint Frost



**SLSW**  
Alghe  
Seaweed

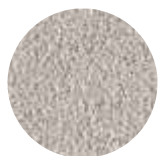
Gaià **(agona)**



**GASF**  
Fiocco Di Neve  
Snowflake



**GAVA**  
Vaniglia  
Vanilla



**GASG**  
Grigio Conchiglia  
Seashell Grey



**GAME**  
Meteorite  
Meteorite

Mojito **marzottointeriors**



**MODU**  
Duna  
Dune



**MOBR**  
Bronzo  
Bronze



**MOIV**  
Avorio  
Ivory



**MOCA**  
Caramello  
Caramel

Cosmopolitan **marzottointeriors**



**COWL**  
Bosco  
Woodland



**COWA**  
Onde  
Waves



**COMU**  
Fungo  
Mushroom

Range 3

Navarone **mariosirtori**



**NVSU**  
Zucchero  
Sugar



**NVSI**  
Seta  
Silk



**NVFL**  
Fiamma  
Flame



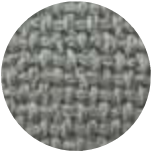
**NVTA**  
Grigio Tortora  
Taupe Grey



**NVMO**  
Moka  
Moka



**NVMA**  
Blu Marino  
Marine



**NVGL**  
Ghiacciaio  
Glacier

Delta **mariosirtori**



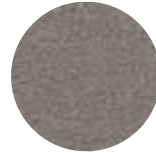
**DECY**  
Cipresso  
Cypress



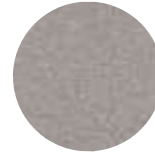
**DESP**  
Zaffiro  
Sapphire



**DEAM**  
Acquamarina  
Acquamarine



**DEDU**  
Polvere  
Dust



**DEWA**  
Wafer  
Wafer



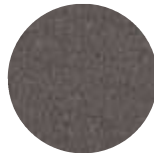
**DEPE**  
Pecan  
Pecan



**DECN**  
Zucchero Filato  
Cotton Candy



**DESA**  
Salmone  
Salmon

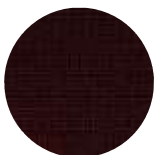


**DEMA**  
Magnete  
Magnet

Revira Iris **RaDa**



**IRYO**  
Yogurt  
Yogurt



**IRCH**  
Ciliegia  
Cherry



**IRST**  
Corda  
String




**IROA**  
Avena  
Oat

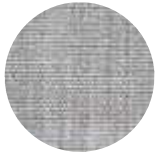


**IRNE**  
Nettuno  
Neptune

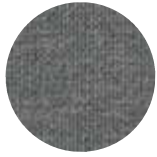
**Range Laminated**

---

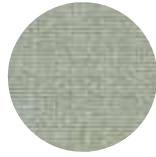
Liso Laminated 



**LCEL**  
Cenere  
Ash

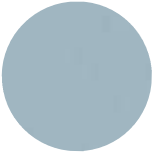


**LGFL**  
Grafite  
Graphite



**LSAL**  
Salvia  
Sage

Solids Laminated 



**SMIL**  
Minerale  
Mineral

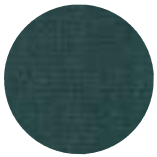


**STAL**  
Tortora  
Taupe

**Range Fireproof**

---

Atrium **kvadrat**



**ATAM**  
Amazzonia  
Amazonia



**ATAP**  
Albicocca  
Apricot



**ATCY**  
Canyon  
Canyon



**ATDS**  
Mare Profondo  
Deep Sea



**ATLI**  
Lime  
Lime



**ATPR**  
Pergamena  
Parchment



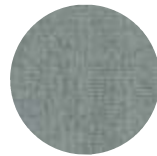
**ATSV**  
Savana  
Savannah



**ATST**  
Tempesta  
Storm



**ATVO**  
Vulcano  
Volcano

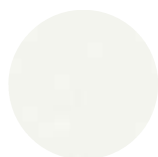


**ATWM**  
Muschio Bianco  
White Musk

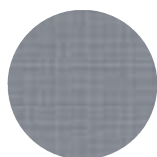
# BATYLINE

## Range 1

---



**BBI**  
Bianco  
White



**BBR**  
Blu Ardesia  
Slate Blue



**BEC**  
Ecrú  
Ecrú



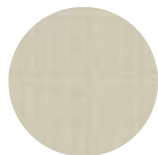
**BGR**  
Grigio  
Grey



**BMA**  
Marrone  
Brown



**BNE**  
Nero  
Black



**BVE**  
Verde  
Green

## Range 2

---



**BCA**  
Cacao  
Cacao



**BBE**  
Beige  
Beige



**BMK**  
Latte  
Milk

## SIMILPELLE • LEATHERETTE



**SP01**  
Ambra  
Amber



**SP02**  
Papiro  
Papyrus



**SP03**  
Cashmere  
Cashmere



**SP04**  
Nero Puro  
Pure Black

## FELTRO • FELT



**FCL**  
Colonia  
Colonia



**FDG**  
Grigio scuro  
Dark grey



**FPN**  
Panna  
Cream



**FRA**  
Rame  
Copper

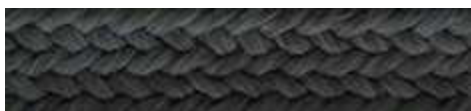


**FTA**  
Tortora  
Taupe

## CORDE • ROPES



**C01**  
Arizona  
Arizona



**C02**  
Sabbia Nera  
Black Sand



**C03**  
Menta  
Mint



**C04**  
Luna  
Moon



**C05**  
Roccia  
Rock



**C06**  
Tramonto  
Sunset



**C07**  
Oceano  
Ocean



**C08**  
Brownie  
Brownie

---

## CORDE PIATTE • FLAT ROPES



**F01**  
Arizona  
Arizona



**F02**  
Sabbia Nera  
Black Sand



**F03**  
Menta  
Mint



**F04**  
Luna  
Moon



**F05**  
Roccia  
Rock



**F07**  
Oceano  
Ocean



**F08**  
Brownie  
Brownie